

A COTSWOLD SYMPHONY

Derek BOURGEOIS opus 109b

Wind band

Arquivo ARMAB

2nd Bassoon

A COTSWOLD SYMPHONY Arquivo ARMAB

Pastoral: Dawn: Mists rise over the Vale of Gloucestershire

Lento $\text{♩} = 55$

Derek Bourgeois Opus 109b

11 **[2]** *ppp* *ppp*

12 *pp* 10

13 10

14 10

15 10

16 *cresc.* 10

17 **[3]** *mp dim.* 10

18 10

19 10

20 10

21 10

22 *mp cresc.* 10

23 **[4]** *mf cresc.* 10 *mp*

24 *cresc.* 10 10 10 10 *f*

30 *mf cresc.* 10 10 10 10

31 *f cresc.* 10 10 10 10

32 **5** *ff dim.* 10 10 *f cresc.* 10 10

33 *ff dim.* 10 10 10 10

34 *f cresc.* 10 10 10 10

35 *ff dim.* 10 10 10 10

36 *p cresc.* 10 10 10 10 *mf*

37 *p cresc.* 10 10 *mf dim.* 10 10 **6** *p* *mp cresc.*

41 *mf* *cresc.* *ff* 3 3 3 3 3 3 3 3

46 *f* 3 3 3 3 3 3 3 3 *mf* *mp*

Maypole

51 **8** *Presto* ♩ = 164 **9** **10** **11** **12** *mf*

113 **13** **14** **15** **16** *mf* *f*

13 10 7 8

156 **17**

f marc.

166 **18** 3 8

183 **19** **20** **21**

205 **22** *f* *mf* *p* *mp* *mf*

219 **23** *mp* *mf* *f*

231 **24** *cresc.* *ff* *f*

240

247 **25** *mf*

253

259 **26**

265 *f*

271 **27** *f*

277 **28** *f marc.*

284

294 29 30 31
7 8
f marc.

317

326 32

335
cresc.

344 33 4
mf 4 4 4 4 *mp dim.*

352 34 10 35 11

377 **36**

mp

384

mf cresc. *f cresc.*

391 **37**

cresc. *f*

397

38

403

409

39

416

fff

428 **40**

ff

The Iron March of Rome

434 *rall.* *meno mosso* $\text{♩} = 52$ **41** $\text{♩} = 52$ **42** **43**

fff *mf* **44** *pp*

452 *p* *pp* *mf* *mp* **45** **46** **47**

f *f poco marc.* **48**

462 *f* *mp* *f pesante* **49**

477 *f* *ff marc.*

483 *f* *ff marc.*

487 *f marc.* *ff marc.*

494 50

499 51

504 52

509 *ff* 53

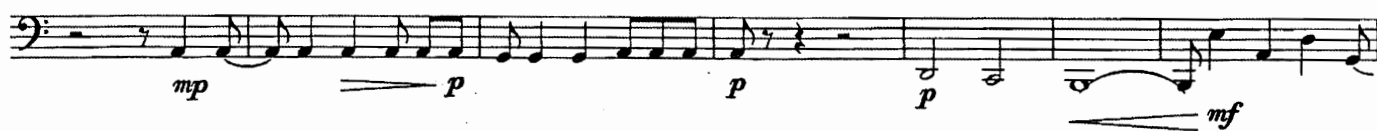
517 54 55

522 *ff marc.* *fff*

525 *ff* 56 *p*

529

57



536



540



CHURCH BELLS: "As sure as God's in Gloucestershire"

543 *accel.*

58

più mosso $\text{♩} = 68$ 

547



552

59



556

60



561



566

61



571

62

poco più tranquillo



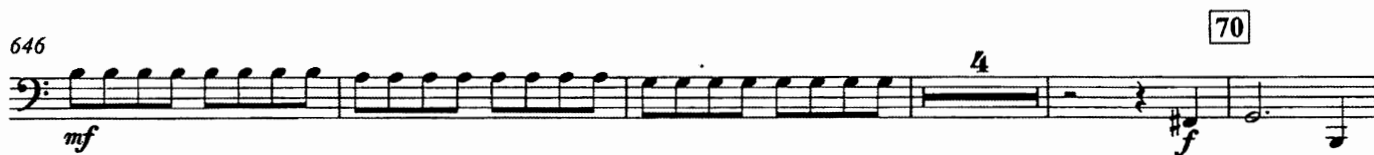
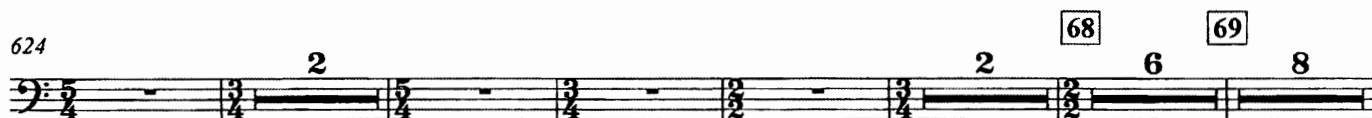
576

63

64



The Old City: Gloucester

603 65 Allegro vivace ♩ = 208 (♩ = 104)

691 75

f marc. *sf* *sf* *sf*

699 76

sf *sf* *ff*

707 77

f

714

721 78

728

735 79

f marc.

742

mf *f* *mf* *f*

749 80

mf *f* *mf*

756

f *mf* *f* *mf*

763 81

ff *mf*

770 82

p *mp* *mf* *mp* *f*

776 83

f *f*

784 84

p *cresc.* *3* *3* *3* *3* *3* *3* *3* *2*

Detailed description: This is a page of a musical score for Bassoon 2, spanning measures 691 to 784. The music is written in bass clef. Measures 75, 76, 77, 78, 79, 80, 81, 82, 83, and 84 are highlighted with box numbers. The score includes various dynamic markings such as *f marc.*, *sf*, *ff*, *f*, *mf*, *ff*, *p*, *mp*, and *cresc.*. Measure 84 features triplets of eighth notes and a crescendo marking. The page number 10 is in the top left, and the instrument name Bassoon 2 is at the top center.

803 85 86
mf cresc. *f* *mf* *f*

818 87 88 89
mf marc. *cresc.*

841 90
f *mp* *f*

849 91 92
f

856 93
mf marc.

869 94
cresc. *f legato*

877

886 95

894 96
f legato

903 97
f marc. *cresc. molto*

912 *Rall.* 98 *a tempo*
fff *dim.*

919 *f dim.* *mf* *V.S.*

923 **99** 4 TIMES SLOWER ($\text{♩} = 52$)

924 *p* 10 10 10 10

925 10 10 10 10

926 10 10 10 10

927 *mp cresc.* 10 10 10 10

928 *mf cresc.* 10 10 10 10

929 **100** 10 10 10 10 *mp*

930 *cresc.* 10 10 10 10 *f*

936 *mf cresc.* 10 10 10 10

937 *f cresc.* 10 10 10 10

938 **101** *ff dim.* 10 *f cresc.* 10 10

939 *ff dim.* 10 10 10 10

940 *f cresc.* 10 10 10 10

Detailed description: This page contains the musical score for Bassoon 2, measures 923 through 940. The music is in 4/4 time, marked '4 TIMES SLOWER' with a quarter note equal to 52 beats. The key signature has one flat (B-flat). The score consists of ten staves of music. Measures 923-928 are in G major. Measures 929-930 are in F major. Measures 931-937 are in E-flat major. Measures 938-940 are in D major. The music features a series of ascending and descending eighth-note patterns, often grouped in fours and marked with a '10' below the staff. Dynamics include piano (p), mezzo-piano (mp), mezzo-forte (mf), forte (f), and fortissimo (ff), with crescendos and decrescendos. Measure 930 ends with a fermata on a whole note. Measure 938 has a key signature change to D major.

941 *ff dim.* 10 10 10 10

942 *p cresc.* 10 10 10 10 *mf*

943 *p cresc.* 10 10 *mf dim.* 10 10

944 **102** *p* 10 10 10 10

945 *cresc.* 10 10 10 10

946 *p* 10 *cresc.* 10 10 10

947 *mf cresc.* 10 10 10 10

948 *f* 10 10 10 10

949 *dim.* 10 10 *poco rall* **103** *a tempo* *mp cresc.* *ff*

954 *poco rall.* **104** *a tempo* *cresc.* *fff marc.* 3 3

958 *rall. al fine* *ten. ten. ten.* *fff* *mp* *fff*