

(Aire de Chacarera)

The bass line is written on a single staff in bass clef, key of B-flat major (two flats), and 6/8 time. It consists of 12 measures. The first four measures are marked with a mezzo-forte (*mp*) dynamic. The notation includes eighth notes, quarter notes, and rests, with accents (>) placed over the first eighth note of each measure. The piece concludes with a double bar line and a final chord.

6

arco

mf

11

Musical score for '11' in bass clef. The notation includes various note values (quarter, eighth, sixteenth, and thirty-second notes) and rests, with some notes marked with a 'v' (accents). The score is divided into measures by bar lines, with repeat signs (double bar lines with dots) indicating repeated sections.

16

cresc

f

20 **B**

ff

25

C

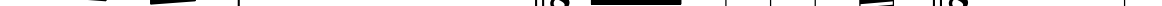
mp

The bass line is written on a single staff in bass clef. It begins with a key signature of one flat (B-flat) and a 3/8 time signature. The first measure contains a quarter note G2, followed by two eighth rests. This is followed by a double bar line and a 6/8 time signature. The next two measures each contain a quarter note G2, a quarter rest, and an eighth note G2. The third measure is followed by a double bar line and a 7/8 time signature. The next two measures each contain a quarter note G2, a quarter rest, and an eighth note G2. The fifth measure is followed by a double bar line and a 6/8 time signature. The final two measures each contain a quarter note G2, a quarter rest, and an eighth note G2. The piece ends with a final double bar line.

35 D arco

mf

40



40

44 **E**

f

49 **F**

ff

54

f

59 **G**

f

63 **H**

mp

68

f

75 **I**

f

82 **J**

mp

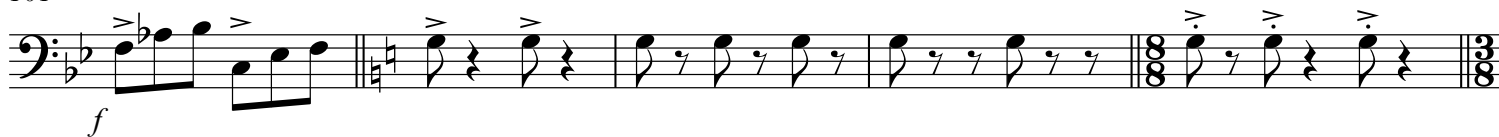
89 **K**

f

95



101

L

106



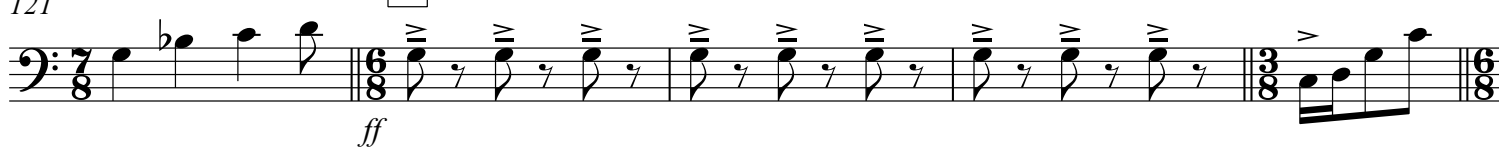
111

M

116



121

N

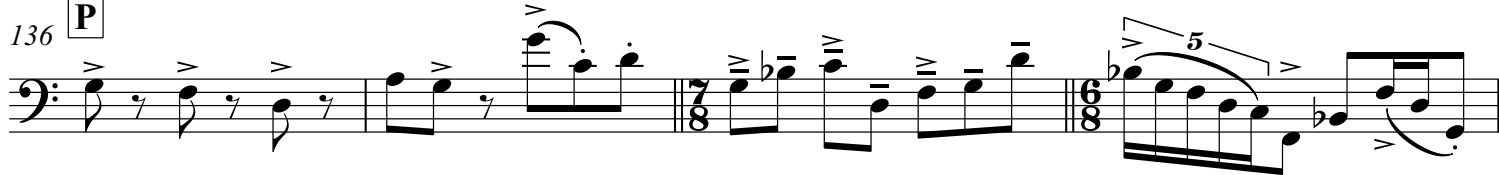
126

O

131



136

P

140

